



# BPA™ 500

## DUAL MODE BLUETOOTH® PROTOCOL ANALYZER



With the adoption of the *Bluetooth* 4.0 specification, *Bluetooth* low energy wireless technology will change how the wireless world connects. Dual mode devices - single devices that combine low energy and Classic *Bluetooth* - are making the already complicated task of developing *Bluetooth* technologies that much more complex. The BPA 500 combines low energy and BR/EDR data in the same intuitive displays, simplifying and accelerating the debugging process. Frontline is once again at the forefront, meeting the needs of *Bluetooth* developers for debugging, testing and verification....fast!

The ComProbe BPA 500 Protocol Analyzer includes powerful ComProbe software and the Dual Mode *Bluetooth* hardware interface.

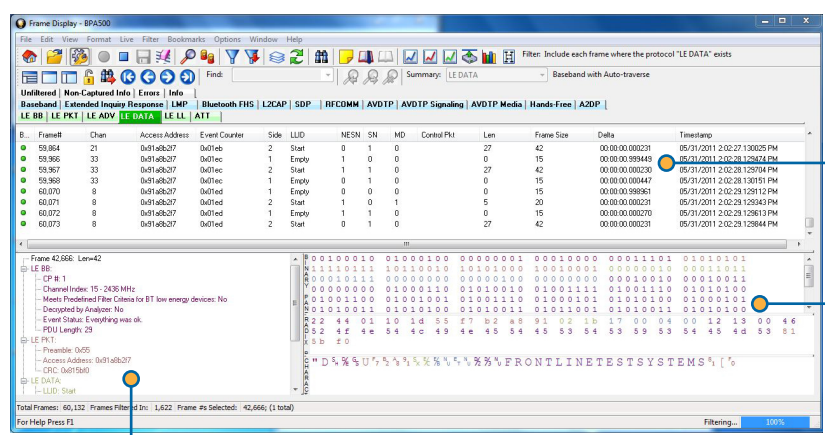
### Key Features and Benefits

- **Greatest Possible Accuracy**  
ProbeSync™ technology synchronizes timestamps between multiple ComProbes and multiple technologies
- **Faster Debugging**  
*Bluetooth* low energy and Classic *Bluetooth* data is displayed in a single graphical user interface
- **See events as they occur** through live decoding and decryption of encrypted data
- **Every Profile and Protocol**  
Decode all Classic *Bluetooth* and *Bluetooth* low energy traffic
- **Maximum Flexibility**  
DecoderScript lets you specify decodes for custom protocols
- Capture multiple LE connections from the same LE or dual mode master as well as a single BR/EDR connection simultaneously
- Follow pairing and decrypt encrypted traffic including Secure Simple Pairing
- **Better Visibility**  
Visibility into all three advertising channels concurrently, even before connection is established

### Developers and Test Engineers rely on ComProbe Tools

The ComProbe BPA 500 takes its place next to the trusted FTS4BT™ as the latest member of the ComProbe protocol analyzer family, and delivers the same dependable performance developers and test engineers have come to expect from Frontline ComProbe tools, the acknowledged industry leader in *Bluetooth* analyzers. Just plug it in and go.

Summary Pane displays a one line overview of each data frame/message. Click on any line to reveal detail in multiple panes below.

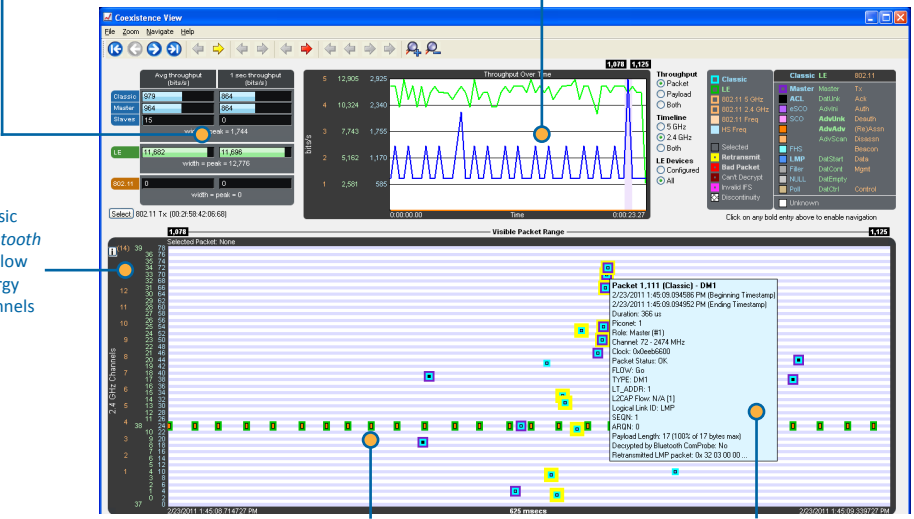


Logical Data Pane shows data in binary, hex and character format.

Decode Pane shows comprehensive layered decoders of each frame/message with clear, concise descriptions.

From detailed decodes to concise graphical depictions of complex data, the ComProbe BPA™ 500 Dual Mode *Bluetooth*® Protocol Analyzer delivers *Bluetooth* low energy and Classic *Bluetooth* protocol analysis like no other product on the market can.

Throughput graphs for average, 1 second and throughput over time.



Classic *Bluetooth* and low energy channels

Classic and low energy packets in a single view

Tooltips with comprehensive packet details

ComProbe is a registered trademark of Frontline Test Equipment, Inc.



## Hardware Specifications

- **Bus Type:**  
USB 2.0 Type A, compatible with USB1.1
- **Operating Frequencies:**  
2402 MHz – 2480 MHz
- **Power:**  
AC Adapter supplied. The output of the adapter is 9Vdc, 2A. The AC Adapter meets the following approvals:

IEC 60950-1:2005

- **Dimensions:**  
4.87" X 4" X 1.25"  
125mm X 100mm X 32mm
- **Weight:**  
0.6lb / 272g
- **Temperature:**  
Storage Temperature: 0° to 40° Celsius  
32° to 104° Fahrenheit

Operating Temperature:  
5° to 55° Celsius  
41° to 95° Fahrenheit

- **Humidity:**  
Operating: 10% to 90% RH (noncondensing)
- **Debugs every Bluetooth Profile and Protocol**

AVDTP Recover	Baseband
AVDTP Report	LMP
BNEP	HCI
AT Commands	L2CAP eL2CAP
AMP Manager	SDP
AVCTP	RFCOMM
AVDTP Signaling	TCS
AVDTP	OBEX
MCAP	AVDTP Media

A2DP	BIP
AVRCP	BPP
AVRCP Browsing	FTP
FAX	OPP
Hands Free 1.6	MAP
HCRP	PBAP
HDP	SYNC
Headset	SAP
HID	SPP

## The ComProbe BPA 500 Hardware Interface

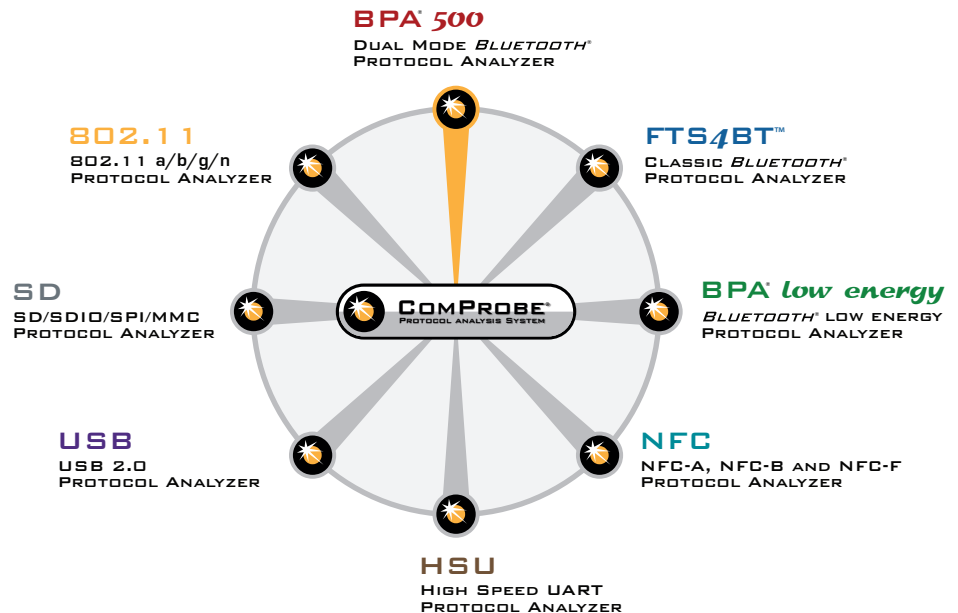
The ComProbe BPA 500 Protocol Analyzer includes the Dual Mode *Bluetooth* hardware interface, which supports the wireless capture of "classic" and low energy *Bluetooth* communications.

The Dual Mode *Bluetooth* hardware interface is one member of an extensive arsenal of technology-specific hardware interfaces, all functioning with the powerful ComProbe software. This modular approach allows greater flexibility in protocol analysis and debugging, and provides comprehensive coexistence views over virtually any combination of protocols.



## Minimum PC Requirements

- Pentium PC 2Ghz or faster
- Windows XP (32-bit) or Windows 7 (32-bit or 64-bit)
- 2GB of RAM
- 50MB free disk space
- USB 2.0 port



## The ComProbe Modular Approach

ComProbe software is at the core of Frontline protocol analysis, allowing technology-specific hardware interfaces to work individually or in combination with other hardware interfaces. This modular approach gives the developer or analyst the widest possible range of scenarios for debugging complex communications.

### To order or for more information:

www.fte.com  
sales@fte.com  
1.800.359.8570 US & Canada  
+1.434.984.4500  
Fax: 434.984.4505



fte.com  
**frontline**<sup>®</sup>  
Debug Communications **Faster**<sup>SM</sup>